

Turtles and Lizards of the Chicago Region

CL = Carapace Length



Blanding's Turtle

- *Yellow Chin/Throat
- *Hinged plastron
- *Med. Up to 24 cm CL



Spotted Turtle

- *Black carapace with 1- several yellow spots per scute
- *Small up to 12 cm CL.



Painted Turtle

- *Red Markings on Marginals/plastron
- *Smooth edged shell
- *Med. Up to 18 cm CL.



Yellow Mud Turtle

- *Peaked 9th marginal scute
- *Anterior/posterior hinged plastron
- *Med. Up to 15 cm CL



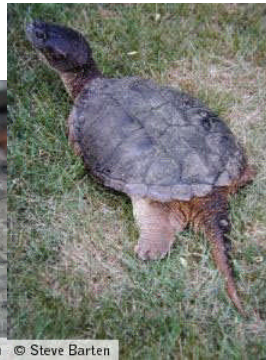
Common Map Turtle

- *Saw toothed Rear Carapace
- *Triangular spot behind eye
- *Med. Up to 24 cm CL



Common Musk Turtle

- *Rounded Carapace
- *Weakly Hinged Plastron
- *Small up to 13 cm CL



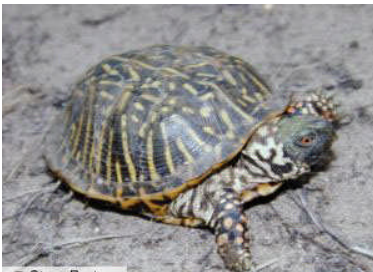
Common Snapping Turtle

- *Long Neck and Tail
- *Tail w/ Saw toothed projections
- *Large up to 47 cm CL



Eastern Box Turtle

- *Keel'd High Dome Carapace
- *Hinged Plastron
- *Small up to 15 cm



Ornate Box Turtle

- *Moderately High carapace
- *Carapace Flattened at midline
- *Small up to 13 cm CL



Red-Eared Slider

- *Yellow/Orange/Red Blotches behind eye
- *Med. Up to 28 cm CL



Stink Pot

- *2 Stripes on head
- *Barbels on chin/throat
- *Highly domed carapace
- *Small up to 13 cm CL



Spiny Softshell

- *Snout squared off
- *Anterior Carapace w/small spines
- *Large up to 38 cm CL



Six-lined Racerunner

- *Tail longer than body
- *small smooth scales on back
- *Long/Slender up to 20 cm TL



Five-lined Skink

- *Smooth body scales
- *7 supra/2 postlabial scales
- *Med. Up to 20 cm TL



Slender Glass Lizard

- *No Limbs
- *Groove on sides of body
- *Long/Slender up to 90 cm TL