



Black Rat Snake
 *Plain Black w/ white between scales
 *Large up to 175 cm TL

Blue Racer
 *Smooth Scales
 *Plain Black/Blue
 *Long up to 150 cm TL

Bull Snake
 *Narrow Snout
 *Enlarged Rostral Scale
 *Large up to 180 cm TL

Eastern Hognose
 *Enlarged upturned plate at the tip of the nose
 *Med. up to 90 cm TL

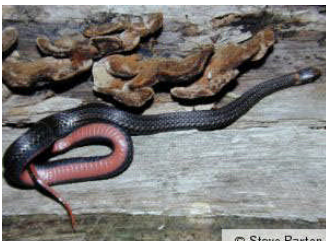


Eastern Milk Snake
 *Black Bordered Red/Brown Blotches or Rings
 *Med. up to 110 cm TL

Fox Snake
 *Yellow w/ Brown Blotches
 *Large up to 130 cm TL

Kirkland's Snake
 *Red/Orange Belly
 *Black spots on side
 *Small up to 47 cm TL

Northern Water Snake
 *Dark Bands Anterior
 *Dark Blotches Posterior
 *Strongly Keeled Scales
 *Large up to 120 cm TL



Redbelly Snake
 *Plane Red Belly
 *Strongly Keeled Scales
 *Small up to 35 cm TL

Eastern Massasaugua
 ***VENOMOUS**
 *Presence of a Rattle
 *Pit between eye/nostral
 *Med. up to 100 cm TL

Brown Snake
 *Prominent Dark Blotches under Eye
 *Scales Strongly keeled
 *Small up to 45 cm TL

Plains & Common Garter Snake
 *Black Bars on Labial Scales
 *Plains stripe on SR 3-4
 *Common stripe on SR 2-3
 *Med. up to 100 cm TL



Ribbon Snake
 *Side Stripe on SR 3-4
 *Keeled Scales
 *Med. Up to 90 cm TL

Smooth Green Snake
 *15 Rows of Smooth Green Scales
 *Slender up to 85 cm TL

Snakes of the Chicago Region

TL = Total Length