

**FROGS OF THE CHICAGO REGION**

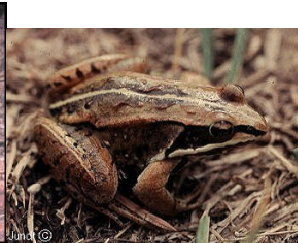


**Cricket frog**  
 \*small  
 \*triangle patch between eyes  
 \*warts  
 call: clacking marbles

**Spring peeper**  
 \*small  
 \*X on back  
 call: hi pitched  
 "peep"

**Chorus frog**  
 \*small  
 \*3 stripes on back  
 \*black eye mask  
 call: comb trill

**Eastern & Cope gray treefrogs**  
 \*lichen pattern (gray or green)  
 \*light patch below eye  
 \*yellow inner thighs  
 eastern call: slow soft trill  
 Cope's call: fast harsh trill

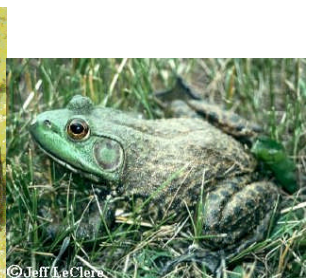


**Northern leopard frog**  
 \*green w/dark spots  
 \*white lateral folds  
 unbroken  
 call: snore w/ clucks

**Plains leopard frog**  
 \*green w/dark spots  
 \*white lateral fold broken  
 near groin  
 call: clucks

**Wood frog**  
 \*brown/tan w/dark eye  
 mask  
 call: raspy quack

**Pickerel frog**  
 \*cream w/square spots  
 call: deep snoring "meow"



**American toad**  
 \*1-2 warts per spot  
 \*large gland behind eye  
 unattached to bony crest  
 unless by a short spur  
 call: 10-30 s melodious trill

**Fowler's toad**  
 \*3 or more warts in large spots  
 \*large gland touches bony crest  
 call: trill-like bleat

**Green frog**  
 \*green to brown  
 \*lateral fold 2/3 of body  
 call: banjo "gung"

**Bullfrog**  
 \*green to brown  
 \*lateral fold to ear  
 call: deep "br-wum"

**SALAMANDERS OF THE CHICAGO REGION**



**Blue-spotted salamander**  
 \*blue spots all over body

**Spotted salamander**  
 \*bright spots in two rows on back  
 \*belly gray

**Smallmouth salamander**  
 \*eye close to snout  
 blueish fleck only on flanks



**Tiger salamander**  
 \*flat toes, irregular spots extending onto belly  
 \*larvae without balancers

**Mudpuppy**  
 \*large aquatic adults, 4 toes on hind feet  
 \*larvae with two lateral stripes



**Eastern Newt**  
 \*lateral rows of black spots or encircling red  
 \*adults with tail fins  
 \*red or brown eft stage

**Red-back salamander**  
 \*small terrestrial  
 \*red- & lead-back phases  
 \*salt & pepper belly



**Slimy salamander**  
 \*small terrestrial  
 \*small white spots  
 \*pale feet

**Four-toed salamander**  
 \*four toes on hind feet  
 \*constriction at base of tail  
 \*white belly with black spots  
 \*near sphagnum moss

**Lesser siren**  
 \*large aquatic  
 \*no hind limbs